

**MATERIALLISTE**

Pos.	Stück	Bezeichnung	Profil	Länge in mm
		<b>Element A - 1 Stück</b>		
1	2	Rahmen	RRK 40x40x3	1302
101	2	"	"	1302
102	4	"	"	2790
201	16	Staketen	Gasrohr 1/2"	3070
202	2	"	"	140
301	16	Kugeln	RBS 8.32005.0035	
302	6	Torbänder	RBS 3.52020.178	
303	2	Bajonettverschluss	MTS 64.7422.00	
304	1	Türanschlag / Hausnummer	BLE 6x245	280
305	1	Schloss mit Kasten	RBS 8.02015.6600	
306	1	Schliessblech	MTS 12.2015.205	
307	2	Drücker	Triebenbacher 57.527	
308	1	Drückerstift 8x8mm	MTS 11.1008.65	
309	3	Bodenbuchse	MTS 64.7421.00	
	2	Zylinderschraube	M6x55	
	2	Senkschraube	M6x20	
		<b>Element B - 2 Stück</b>		
2	2	Rahmen	RRK 40x40x3	2872
103	2	"	"	2872
203	40	Staketen	Gasrohr 1/2"	2820
301	40	Kugeln	RBS 8.32005.0035	
		<b>Element C - 2 Stück</b>		
3	2	Rahmen	RRK 40x40x3	3148
104	2	"	"	3148
204	44	Staketen	Gasrohr 1/2"	2320
301	44	Kugeln	RBS 8.32005.0035	
		<b>Element D - 2 Stück</b>		
4	2	Rahmen	RRK 40x40x3	3700
105	2	"	"	3700
205	52	Staketen	Gasrohr 1/2"	1820
301	52	Kugeln	RBS 8.32005.0035	
		<b>Pfosten</b>		
5	2	Pfosten	RRW 80x80x6.3	3300
6	2	"	"	3050
7	2	"	"	2582
8	2	"	"	2010
206	8	Fussplatten	BLE 15x180	180
207	24	Laschen	BLE 20x30	80
310	8	Kugeln	RBS 8.32005.0080	
311	8	Pfostendeckel	MTS 15.1212.8080	
	48	Zylinderschraube	M10x20	
	48	Muttern	M10	
	96	U-Scheiben	M10	
	8	Sechskantschrauben	M10x35	
	32	Klebeanker	HAS-RMq6x125/35	

**MATERIALBEDARF / Hauptmaterial ohne Beschläge und Befestigungen**

Pos.	Stück	Bezeichnung	Profil	Länge in mm	Kg / m	Kg /tot
	4	<i>Pfosten</i>	<i>RRW 80x80x6.3</i>	<i>6000</i>	<i>14.2</i>	<i>341</i>
	10	<i>Rahmen</i>	<i>RRK 40x40x3</i>	<i>6000</i>	<i>3.41</i>	<i>205</i>
	63	<i>Staketten</i>	<i>Gasrohr 1/2"</i>	<i>6000</i>	<i>1.22</i>	<i>461</i>
	1	<i>Fussplatten</i>	<i>BLE 15x180</i>	<i>1440</i>	<i>21.6</i>	<i>31</i>
	1	<i>Laschen</i>	<i>BLE 20x30</i>	<i>1920</i>	<i>4.71</i>	<i>9</i>
						-
						-
<i>Total</i>						<b><i>1'047</i></b>

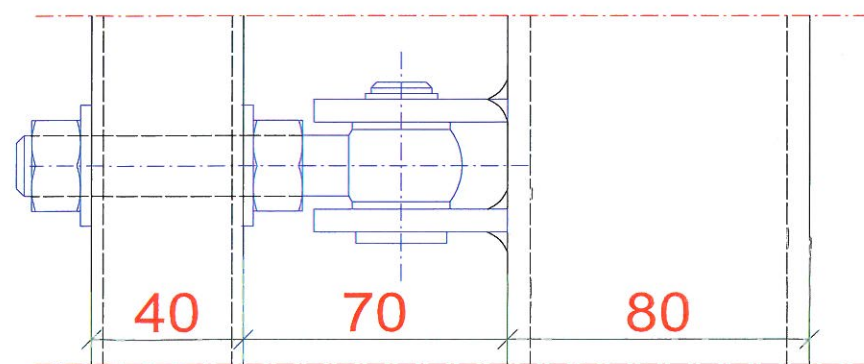
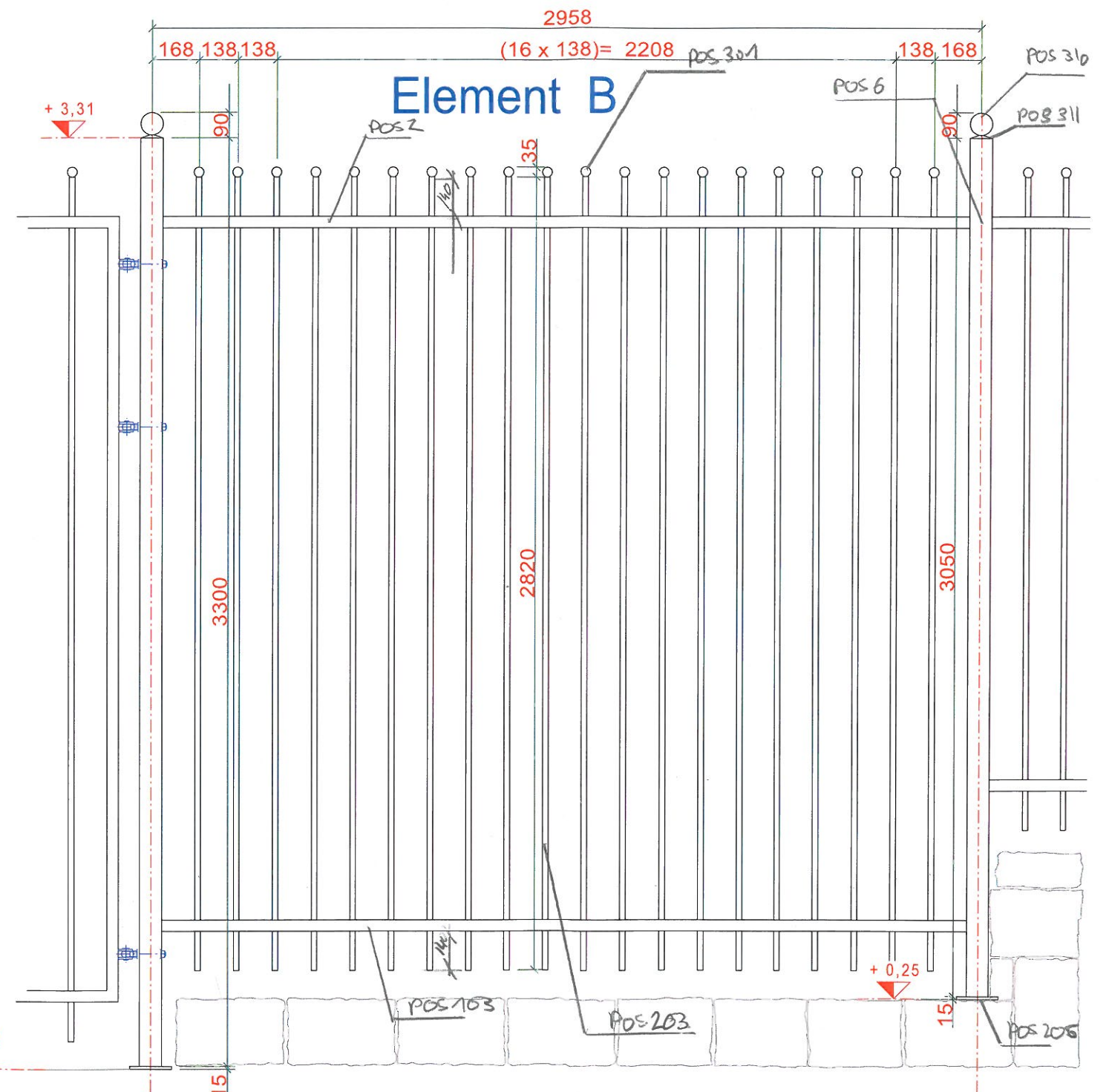
**BEILAGE DETAILAUSZUG**

- 1
- 2
- 3
- 4
- 5
- 6
- 7
- 8
- 9
- 10

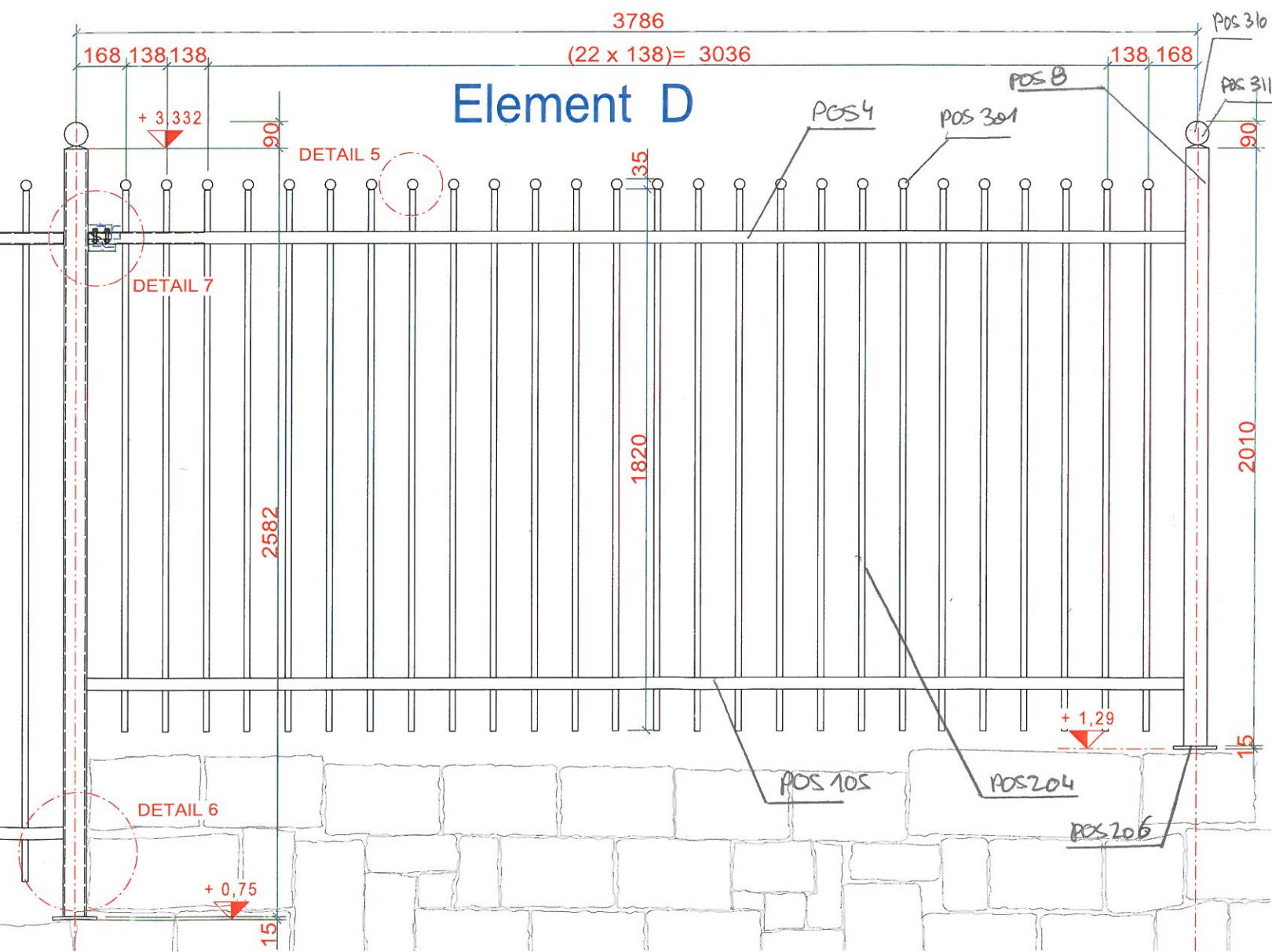
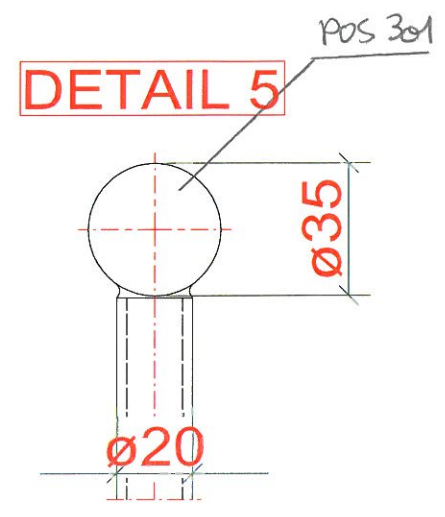
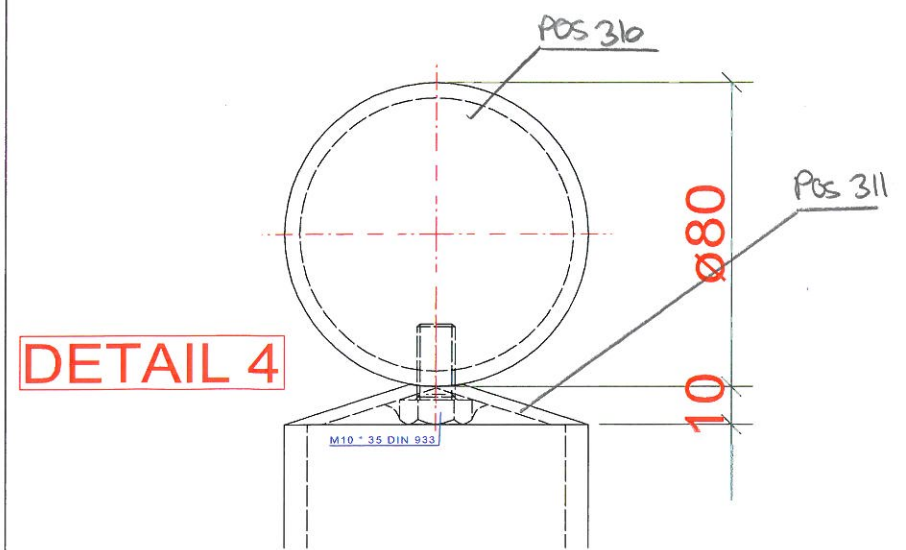
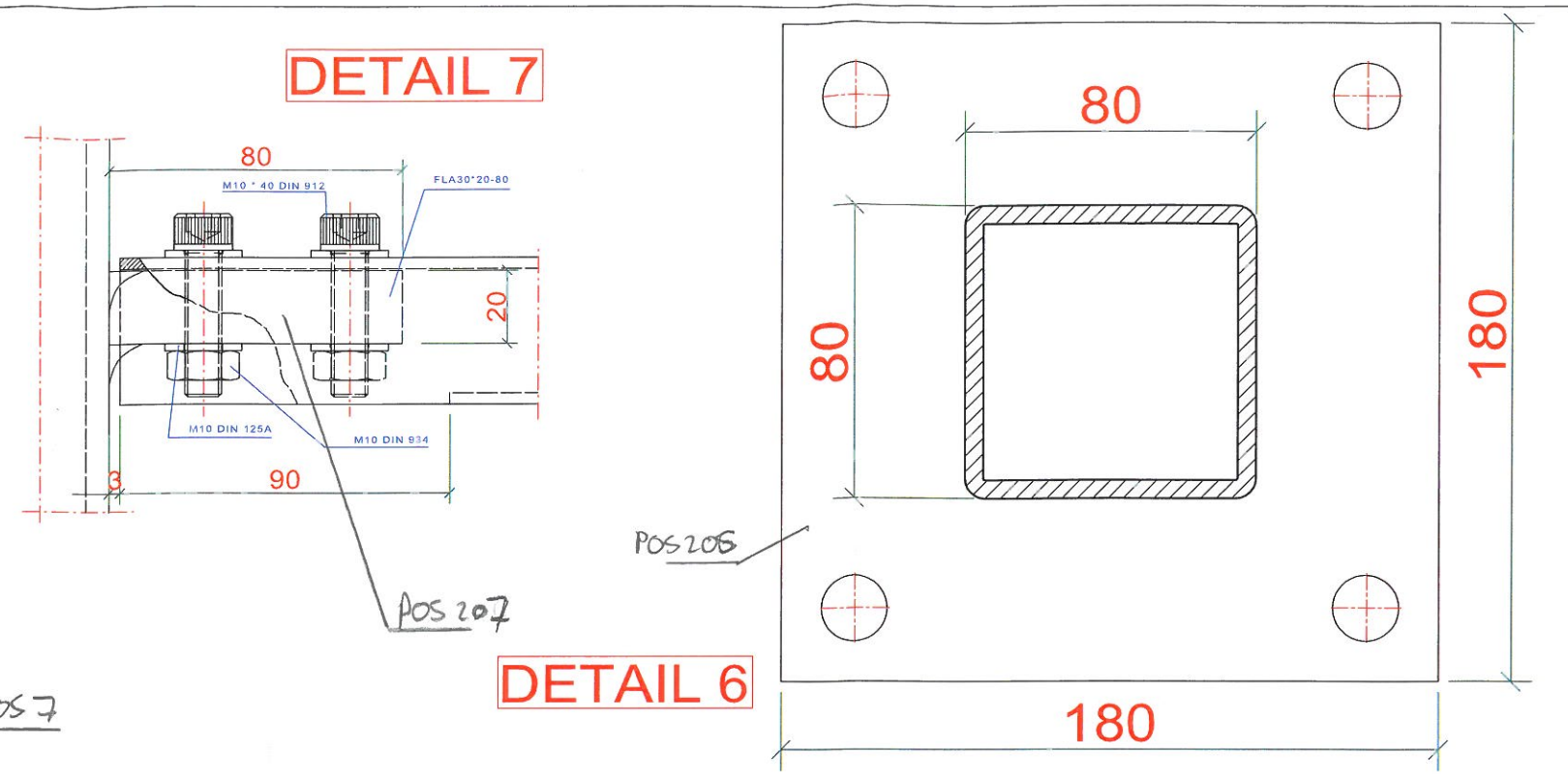
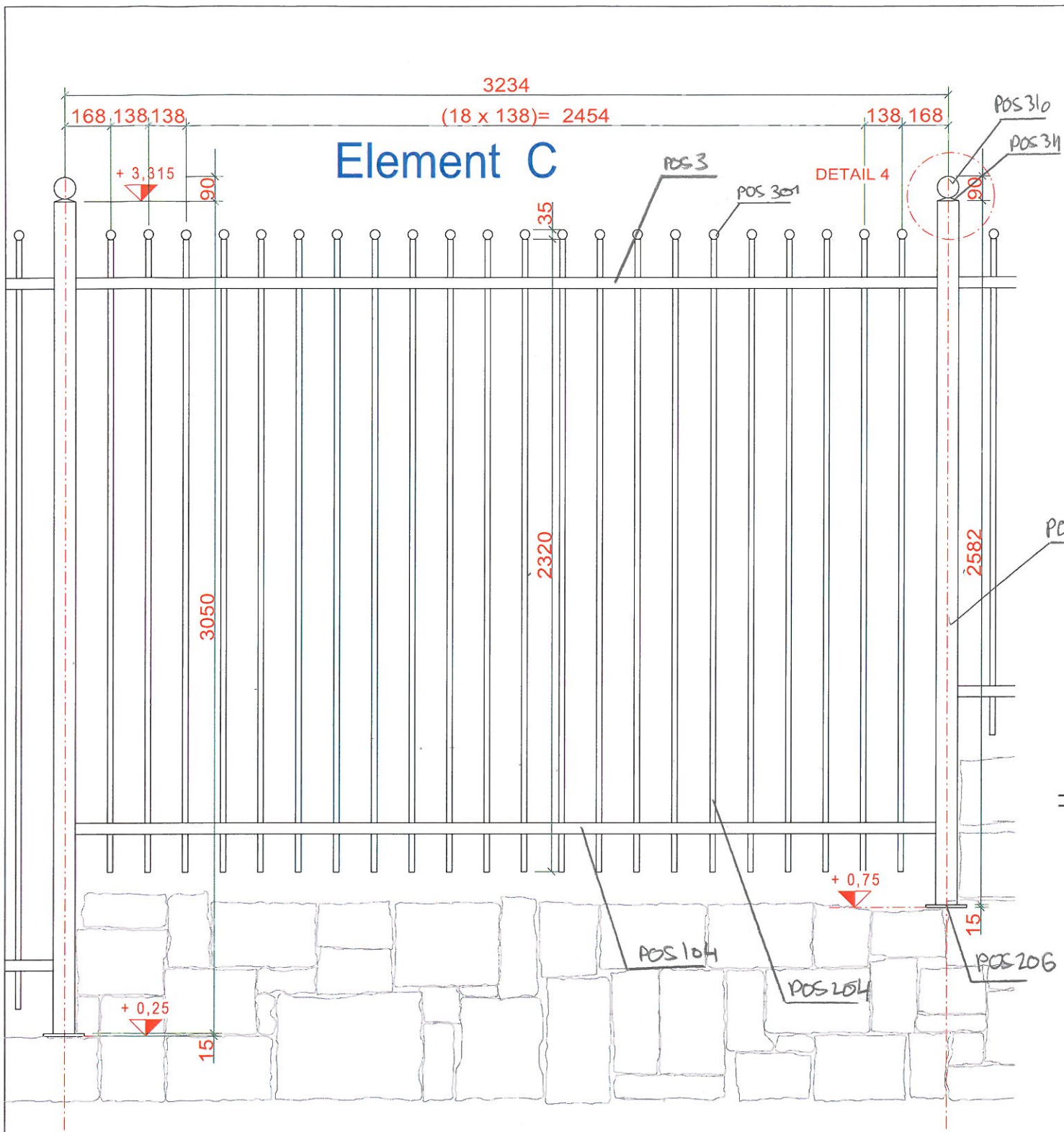
**Total 10 Stangen à 6000mm**

- 1
- 2
- 3
- 4
- 5
- 6
- 7
- 8
- 9
- 10
- 11
- 12
- 13
- 14
- 15
- 16
- 17
- 18
- 19
- 20
- 21
- 22
- 23
- 24
- 25
- 26
- 27
- 28
- 29
- 30
- 31
- 32
- 33
- 34
- 35
- 36
- 37
- 38
- 39
- 40
- 41
- 42
- 43
- 44
- 45
- 46
- 47
- 48
- 49
- 50
- 51
- 52
- 53
- 54
- 55
- 56
- 57
- 58
- 59
- 60
- 61
- 62
- 63

**Total 63 Stangen à 6000mm**







MATERIALLISTENAUFGABE 2014			Mst. 1: 5 (A3)
Aufgabe 6	Kandidat/In:	Nr.	Blatt 10 von 10